

PREMIUM ROSES

THE  
**FARM DIRECT**  
COMPANY

PREMIUM CARNATIONS



# PREMIUM FLOWERS

The Farm Direct Company and Singha SAS were established to meet the demands of premium wholesalers around the world that have expressed a need to buy directly from reliable farms, such as ours, with consistent high quality flowers. We produce and export premium hybrid tea roses, spray roses, garden roses, hydrangeas and carnations.

Our Farms are dedicated to Excellence, the Well-Being of our Workers and to the Protection of our Environment.

At the Farms we have a 50/50 ratio of male to female employees. Over 70% of the postharvest employees are women which are the main providers for their households. Every Premium Flower we produce and export begins with the Dedicated, Hardworking People at the Farms. We are very proud to have been certified Global Gap 2025/26.

Our Unrivaled Roses and Carnations grown in Tocancipa, located strategically in the northern region of the Sabana de Bogotá stand out for their Brilliant Colors, Large Blooms and Longevity. The facilities at our farms reflect our Attention to Detail and Constant Pursuit of Improvement. State-of-the-Art computerized greenhouses, modern cold storage facilities and our strict control of procedures guarantee a Farm Direct Flower.





## RED



**FREEDOM**



**MAMMA MIA**



**EXPLORER**



**RED PANTHER**



**WHITE SHIMMER**

## WHITE



**HIGHLIGHT**



**PROUD**



**VENELA**



**MONDIAL**

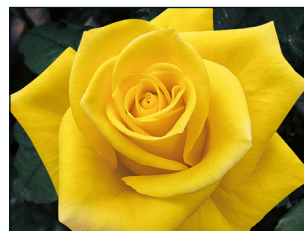
## YELLOW



STARDUST



MOMENTUM



SUNDAY MORNING



GOLDFINCH



SWEET BEAT

## PINK



LUCIANO



BE SWEET



PRICELESS



PINK MONDIAL



BLESSING





COUNTRY BLUES

## LAVENDER



KENDALL



COOL WATER



MOODY BLUES



DEEP PURPLE

## HOT PINK



PINK FLOYD

## HOT PINK



CORAL REEF

## ORANGE



ORANGIATA



ORANGE CRUSH



HILUX





SHIMMER

## PEACH



TIFFANY

## NOVELTY



CANDLELIGHT



SOUL



QUICKSAND



VICKY GARDENS



WHITE O'HARA



LEMONADE



COUNTRY CANDY



CANDY X-PRESSION



MANDARIN X-PRESSION



VINTAGE

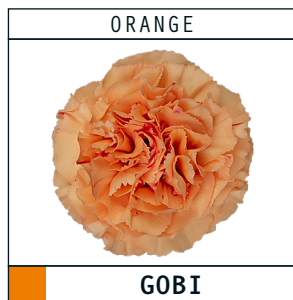
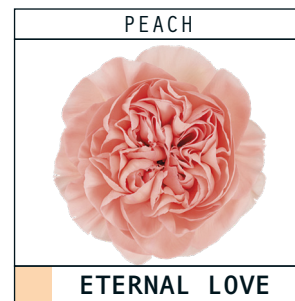
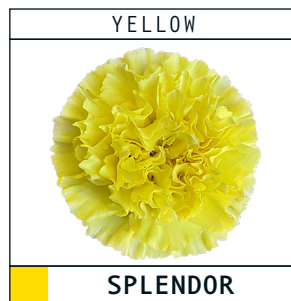
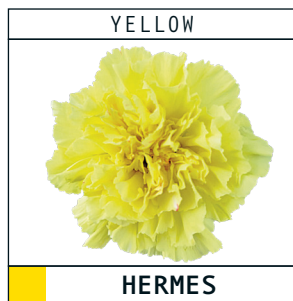
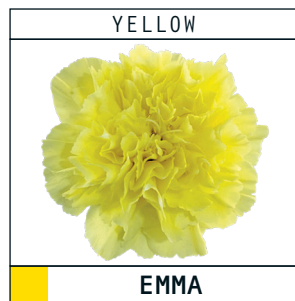
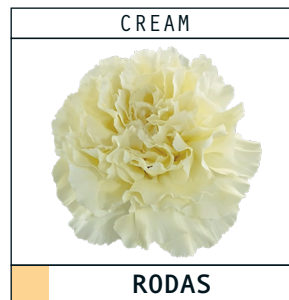


PANDORA





CARNATIONS





# CARNATIONS

HOT PINK



HANDEL

HOT PINK



ZEPELLIN

PURPLE



ZAFIRO

BURGUNDY



ZURIGO

RED



DON PEDRO

RED



DON LUIS

RED



FORESE

NOVELTY



BRUT

NOVELTY



PASTEL CRIMEA

BICOLOR



YUKARI CHERRY

BICOLOR



DAMASCUS

BICOLOR



APPLE TEA

BICOLOR



LAVANDER PIXEL

BICOLOR



PINK PIXEL

BICOLOR



PURPLE PIXEL



# HYDRANGEAS

## NATURAL COLORS



White

## NATURAL COLORS



Lemon Green

## NATURAL COLORS



Mini Green

## NATURAL COLORS



Green Variegated

## NATURAL COLORS



Emerald Green

## NATURAL COLORS



Blue Bogotana

## NATURAL COLORS



Blue Criolla

## NATURAL COLORS



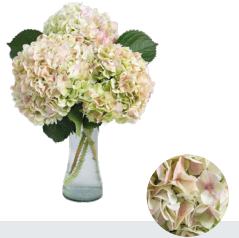
Shocking Blue

## NATURAL COLORS



Lavender

## NATURAL COLORS



Antique Green

## NATURAL COLORS



Antique Red

## TINTED COLORS



Light Green

## TINTED COLORS



Green

## TINTED COLORS



Turquoise

## TINTED COLORS



Baby Blue



# HYDRANGEAS

## TINTED COLORS



Sky Blue

## TINTED COLORS



Blue Cenizo

## TINTED COLORS



Dark Blue

## TINTED COLORS



Light Lavender

## TINTED COLORS



Lilac

## TINTED COLORS



Light Purple

## TINTED COLORS



Lavender

## TINTED COLORS



Purple

## TINTED COLORS



Dark Purple

## TINTED COLORS



Plum

## TINTED COLORS



Light Peach

## TINTED COLORS



Peach

## TINTED COLORS



Cream

## TINTED COLORS



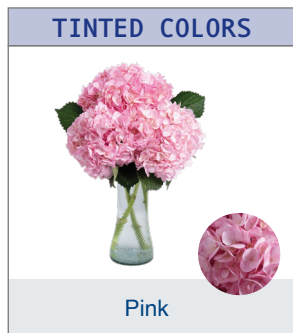
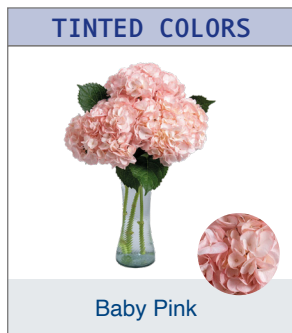
Orange

## TINTED COLORS



Light Pink

# HYDRANGEAS



GRADE	HEAD SIZE	CUT STAGE	STEMS PER QUARTER	VOLUME WEIGHT	REAL WEIGHT	LENGTH
MINI	10 CM	30%	60	6,95 kl	6,25 kl	60 CM
SELECT	16 CM	80%	40	6,95 kl	5,75 kl	60 CM
PREMIUM	20 CM	90%	30/35	6,95 kl	5,90 kl	60 CM
JUMBO	24 CM	100%	15/18	6,95 kl	4,55 kl	60 CM





RICHARD VAUGHAN  
GENERAL MANAGER  
[richard@farmdirectco.com](mailto:richard@farmdirectco.com)  
[www.farmdirectco.com](http://www.farmdirectco.com)

SALES DEPARTMENT  
[sales@farmdirectco.com](mailto:sales@farmdirectco.com)  
 [thefarmdirectcompany](https://www.instagram.com/thefarmdirectcompany)



MADELEINE ATTARA  
MARKETING MANAGER  
[madeleine@farmdirectco.com](mailto:madeleine@farmdirectco.com)  
 Made-attara  
[www.farmdirectco.com](http://www.farmdirectco.com)

USA: TEL. (1) 786.228.9271  
(1) 786.228.9614  
COLOMBIA: BOGOTÁ, TEL. (57) 601.210.2662